

LONG 1 A

Musical notation for LONG 1 A, a single staff in 4/4 time. It begins with a quarter rest, followed by a quarter note G4, a dotted quarter note A4, and a half note B4. After a whole rest, there is a quarter note G4, a quarter note F4, a quarter note E4, and a quarter note D4. The piece concludes with a dotted quarter note G4, a dotted quarter note A4, and a half note B4.

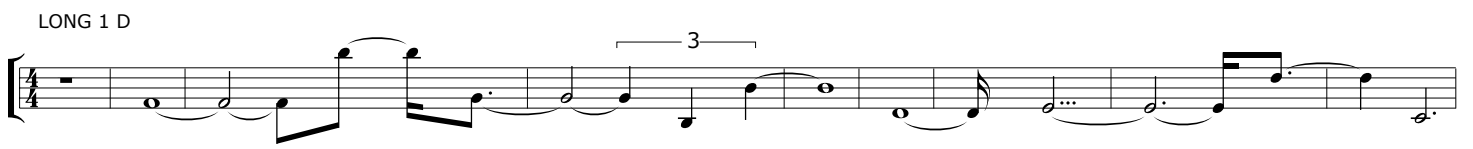
LONG 1 B

Musical notation for LONG 1 B, a single staff in 4/4 time. It starts with a quarter rest, followed by quarter notes G4, A4, B4, and C5. A dotted quarter note B4 is followed by a dotted quarter note A4, a dotted quarter note G4, and a dotted quarter note F4. A triplet of eighth notes (G4, A4, B4) is followed by quarter notes C5, B4, and A4. The piece ends with a dotted quarter note G4, a dotted quarter note F4, and a half note E4.

LONG 1 C

Musical notation for LONG 1 C, a single staff in 4/4 time. It begins with a whole rest, followed by a triplet of eighth notes (G4, A4, B4). This is followed by quarter notes C5, B4, and A4. A dotted quarter note G4 is followed by a dotted quarter note F4, a dotted quarter note E4, and a dotted quarter note D4. The piece concludes with a dotted quarter note C4, a dotted quarter note B3, and a half note A3.

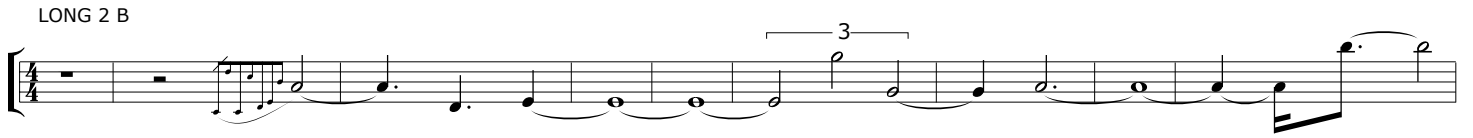
LONG 1 D

Musical notation for LONG 1 D, a single staff in 4/4 time. It starts with a whole rest, followed by quarter notes G4, A4, and B4. A triplet of eighth notes (C5, B4, A4) is followed by quarter notes G4, F4, and E4. A dotted quarter note D4 is followed by a dotted quarter note C4, a dotted quarter note B3, and a dotted quarter note A3. The piece ends with a dotted quarter note G3, a dotted quarter note F3, and a half note E3.

LONG 2 A

Musical notation for LONG 2 A, a single staff in 4/4 time. It begins with a quarter rest, followed by quarter notes G4, A4, and B4. A dotted quarter note A4 is followed by a dotted quarter note G4, a dotted quarter note F4, and a dotted quarter note E4. A triplet of eighth notes (D4, E4, F4) is followed by quarter notes G4, A4, and B4. The piece concludes with a dotted quarter note A4, a dotted quarter note G4, and a half note F4.

LONG 2 B

Musical notation for LONG 2 B, a single staff in 4/4 time. It starts with a whole rest, followed by a triplet of eighth notes (G4, A4, B4). This is followed by quarter notes C5, B4, and A4. A dotted quarter note G4 is followed by a dotted quarter note F4, a dotted quarter note E4, and a dotted quarter note D4. A triplet of eighth notes (C4, B3, A3) is followed by quarter notes G3, F3, and E3. The piece ends with a dotted quarter note D3, a dotted quarter note C3, and a half note B2.

LONG 2 C

Musical notation for LONG 2 C, a single staff in 4/4 time. It begins with a whole rest, followed by quarter notes G4, A4, and B4. A dotted quarter note A4 is followed by a dotted quarter note G4, a dotted quarter note F4, and a dotted quarter note E4. A triplet of eighth notes (D4, E4, F4) is followed by quarter notes G4, A4, and B4. The piece concludes with a dotted quarter note A4, a dotted quarter note G4, and a half note F4.

LONG 2 D

Musical notation for LONG 2 D, a single staff in 4/4 time. It starts with a quarter rest, followed by quarter notes G4, A4, and B4. A dotted quarter note A4 is followed by a dotted quarter note G4, a dotted quarter note F4, and a dotted quarter note E4. A triplet of eighth notes (D4, E4, F4) is followed by quarter notes G4, A4, and B4. The piece concludes with a dotted quarter note A4, a dotted quarter note G4, and a half note F4.

LONG 3 A



LONG 3 B



LONG 3 C



LONG 3 D



REPS 1 A



REPS 1 B



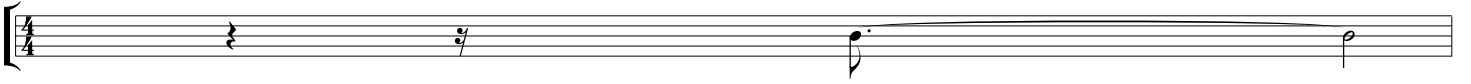
REPS 1 C



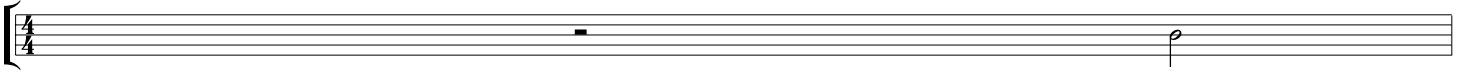
REPS 1 D



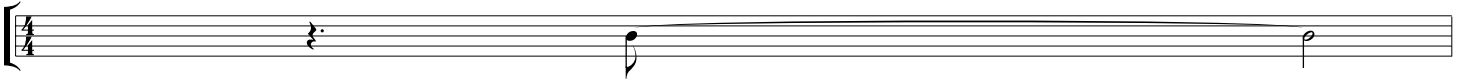
REPS 2 A



REPS 2 B



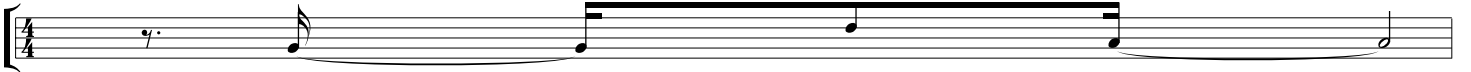
REPS 2 C



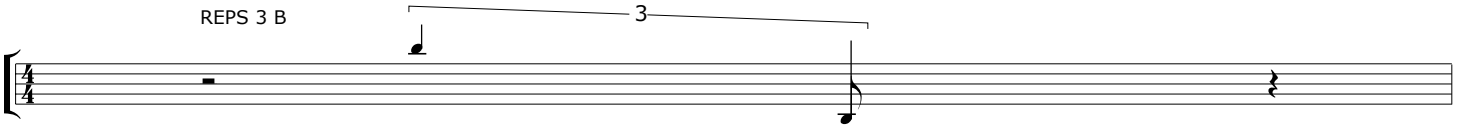
REPS 2 D



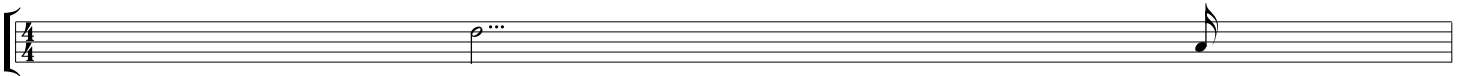
REPS 3 A



REPS 3 B



REPS 3 C



REPS 3 D

